

~ For students and parents with foreign roots ~

# Informative Seminar of School System in Japan

(Senior High School, University and Professional Training College)  
and Job in Japan

Free

**Get knowledge of the system  
and think about your direction !**

With Interpreter

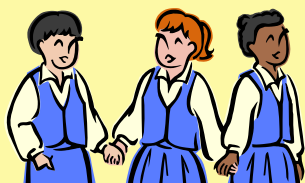
Portuguese · Spanish · English ·  
Vietnamese · Tagalog

What is the entrance exam ?

What kind of jobs are  
available in Japan ?

How much will it cost ?

What are differences among  
full-time employee, part-timer  
and ARUBAITO ?



Instructor: Haruo Hondo Representative Director, G-Community NPO

Date: The 1st Seminar --- November 21 (Sun) , 2021 Reception 13:30

- ① 14:00~15:20 Senior High School, Professional Training College, University
- ② 15:30~17:00 20 jobs in Japan

The 2nd Seminar --- December 5 (Sun) , 2021 Reception 13:30

- ① 14:00~15:20 Senior High School, Professional Training College, University
- ② 15:30~17:00 20 jobs in Japan

**Please apply for registration by choosing the 1<sup>st</sup> or the 2<sup>nd</sup> .**

Individual participation of ① and ② are also welcome.

☆ Individual participation of youth  
and parents are also welcome

Participants: Foreign rooted youth of age 10 to 20 and Parents

Limit: 15 people

Local: The 1st seminar--- Isesaki-shi Kasuri-no-sato, Shimin-koryu-kan,  
2nd Floor, The 6<sup>th</sup> Room (1712-2, Showa-cho, Isesaki-shi)

The 2nd seminar--- Isesaki-shi Kasuri-no-sato, Enkei-koryu-kan,  
The 1<sup>st</sup> Room (1712-2, Showa-cho, Isesaki-shi)

Inquiry · Registration: Applications close upon reaching its capacity.

Please inform your name, phone number, e-mail, nationality and age to:

Email: [suerikibou@docomo.ne.jp](mailto:suerikibou@docomo.ne.jp) (Portuguese, Spanish),  
[jp.ed.gcommunity@gmail.com](mailto:jp.ed.gcommunity@gmail.com) (English, Japanese) or  
phone below (Mon. through Sat. 18:00~21:00)  
090-7249-0470 (Portuguese, Spanish), 070-5021-9103 (English, Japanese)

Sponsored by : Board of Education of Gunma Prefecture

Organized by : NPO G community



Please check your  
temperature prior to  
participation.



Please put on  
a face mask.