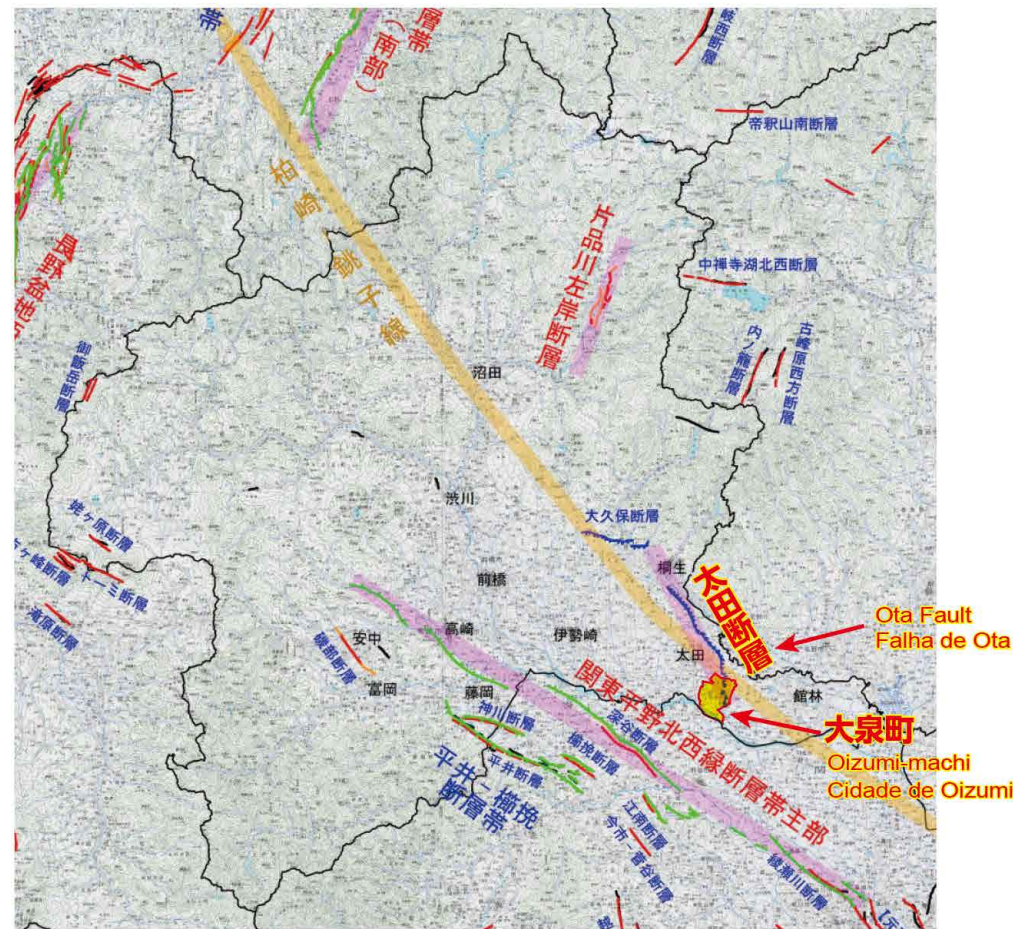


# 揺れやすさマップ2 (太田断層)

# Quake map 2 (Ota Fault) Mapa de Nível de Tremor 2 (Falha de Ota)

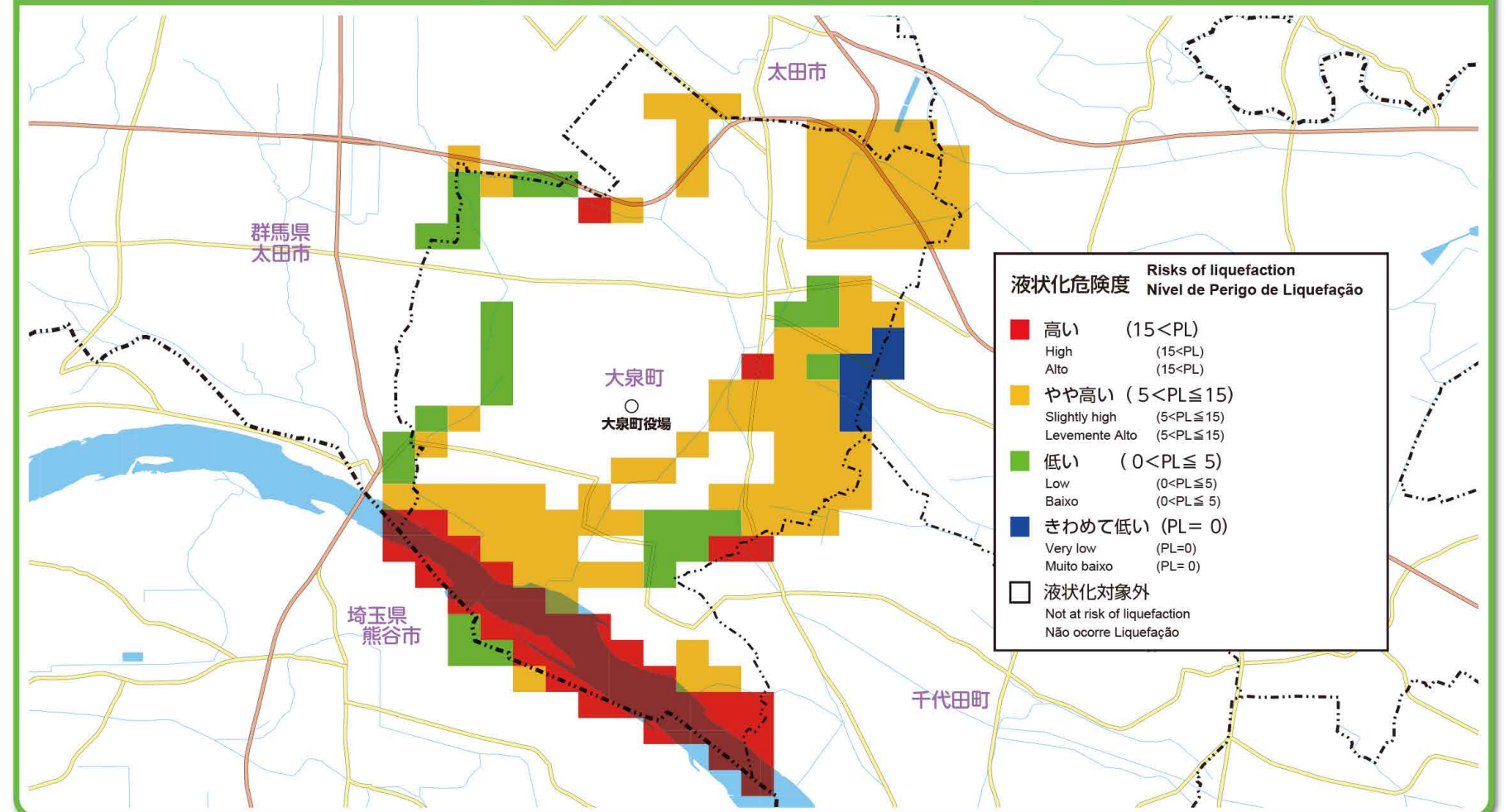
## 想定断層(帯)と想定断層のモデルの位置図

The supposed geologic faults (zones) and their location map  
Modelo e Posição Aproximada da Falha (Linha)



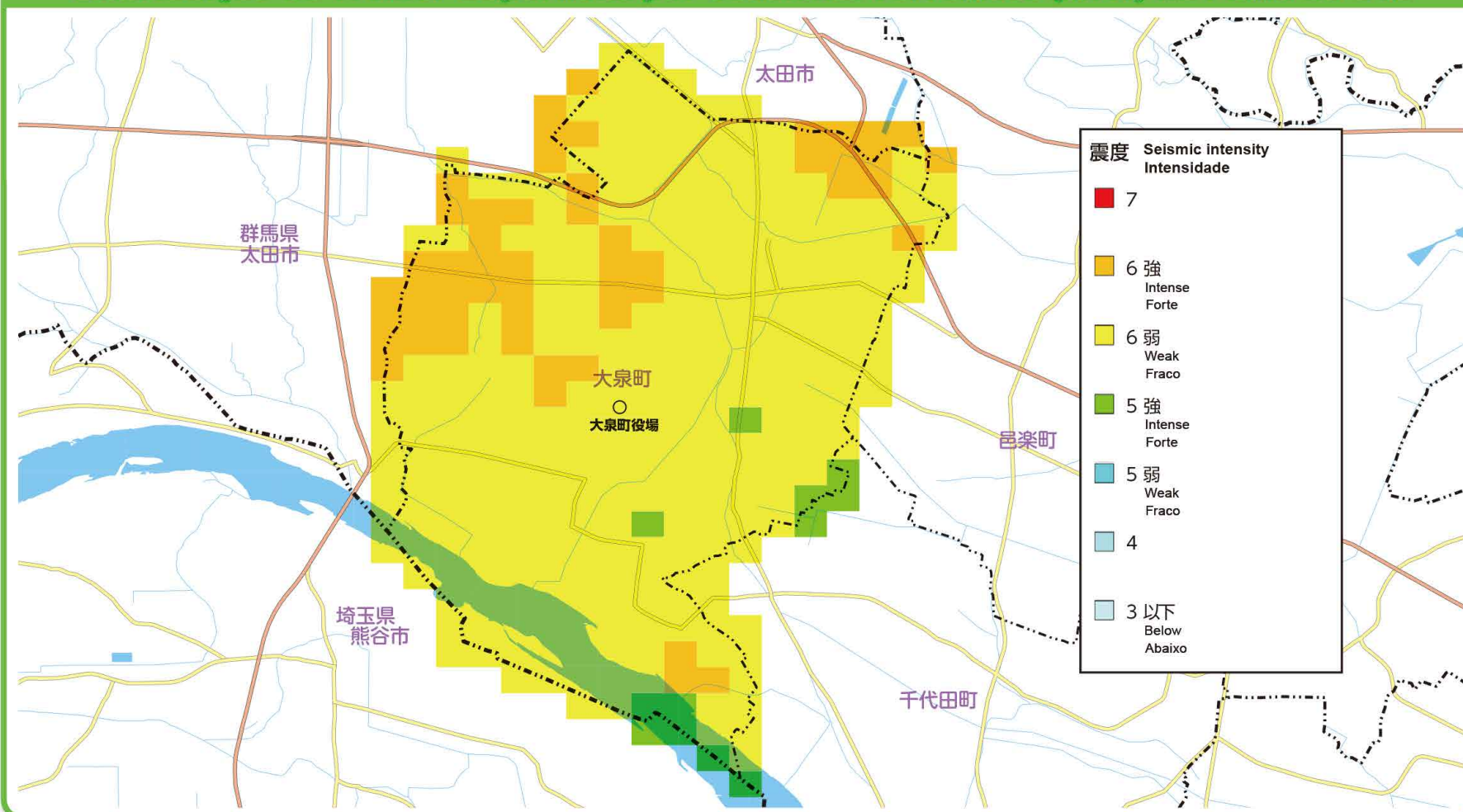
## 太田断層による地震 (M7.1) における液状化危険度

The risks of liquefaction in the event of an earthquake (magnitude 7.1) on the Ota Fault  
Nível de Perigo de Liquefação por ocasional Terremoto (M7.1) na Falha de Ota



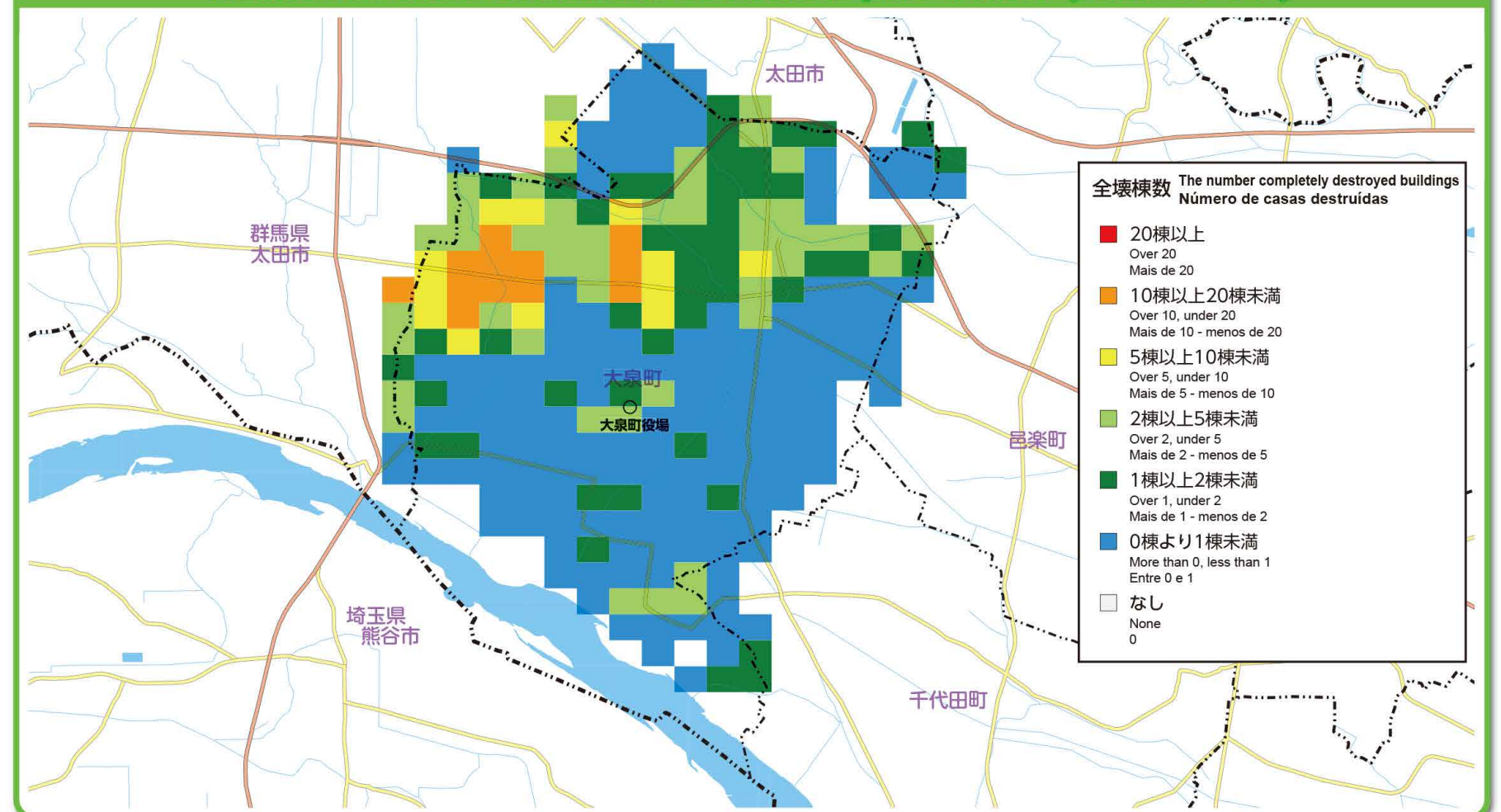
## 太田断層による地震(M7.1)の場合の地表震度分布図

The distribution map of surface seismic intensity in the event of an earthquake (magnitude 7.1) on the Ota Fault  
Distribuição de Tremor Superficial por ocasional Terremoto (M7.1) na Falha de Ota



## 揺れによる全壊棟数分布 (太田断層)

The distribution of the number of buildings completely destroyed by the quake (Ota Fault)  
Número de casas totalmente destruídas pelo tremor (Falha de Ota)



群馬県地震被害想定調査に基づいて作成しています。

The estimates are based on Gunma Prefecture's Earthquake Hazard Study.

Produzido de acordo com a Pesquisa de Estimativa de Danos Causados por Terremoto em Gunma-ken.